



PRODUCT DESCRIPTION

The **abCOR-T** panel combines the **abCOR-ECCO+NEEDLE PUNCH FACE** with an acoustic fabric face running between a top and bottom U-Shape track system, designed to provide high absorption in the mid frequencies of sound, with the 40mm **abCOR-ECCO** panel faced in fabric having an absorption of 100% across these mid frequencies. This system is designed for HIGH impact sports environments where speech clarity is vital. All current design guides for schools in the UK and Ireland like BB93 and TGD-026-1 "Acoustic Design of Schools" set strict criteria for mid frequency reverberation times. The **abCOR-T** panel is designed to provide maximum absorption with maximum protection to the absorption material.

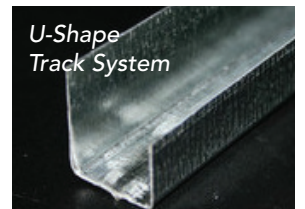
PRODUCT SPECIFICATIONS

Thickness: 25, 40 and 50mm acoustic polyfiber with 2mm needle punch face.

Sizes: Standard panel sizes 1500mm x 1500mm.

Acoustic Performance:

Product	Thickness mm	Sound Absorption Coefficient (when tested in accordance with BS EN ISO 354: 2003)					
		125 Hz	250 Hz	500 Hz	1000 Hz	2000 Hz	4000 Hz
abCOR-ECCO TRACK	25	0.16	0.42	0.76	0.97	1.00	0.94
	40	0.40	0.73	1.07	1.12	1.01	0.95
	50	0.44	0.86	1.11	1.11	1.01	0.96



Fire Rating:

abCOR-ECCO panels comply with the Class 'O' requirements of the Building regulations, when tested to BS476: Part 6: 1981 and Part 7: 1987. Absorbers with a spray painted finish do not have a fire rating. Cara, Screen and Lucia fabrics meet the requirements of Class 1 Surface Spread of Flame when tested to BS476: Part 7: 1997 (As Amended). The composite absorbers have not been fire tested.

Colour Range:

The absorption panels are finished in high quality acoustic fabric available in various colours. Fabric choice: Cara. The track system comes as standard white.

"We are delighted with the work carried out by Donegan Acoustics, as your work in installing sound attenuation panels in our staff canteen has provided us with a comfortable acoustic environment in which to take our breaks once again. Prior to the installation of your acoustic panels, many staff had discontinued using the canteen for tea / lunch breaks and there was a noticeable decrease in camaraderie and morale in the offices. Without the panels, the reverberation of sound in this room was so significant that it was next to impossible to comprehend conversation across a table. In actual fact the sound quality in the room was nauseating. There was a sense of apprehension and disbelief amongst some staff that anything could be done to improve the situation but thankfully we are delighted to report that all staff are very happy with the impact of your work and are enjoying the benefit of proper rest breaks once again."

Eamonn Guilfoyle, Assistant Principal, Dept of Social Protection - Midlands North Division, Mullingar.

