

TAVINEL ACOUSTIC PANEL - RC 6

DATA SHEET

Architectural Specifications

PRODUCT

TAVINEL RL 6 is a acoustic panel using a unique slot-perforated design, giving a very uniform appearance when used as wall or ceiling treatment.

The Tavinel panels are made up of an **MDF core** sandwiched between a **surface layer** of real wood veneer, melamine or paint and an **acoustic fleece**

DIMENSIONS

Perforation Face: 6 mm wide slots 8,5mm long

Open area: 9.1 % perforated face

Thickness: 12mm

Weight: 9,5 kg / m²

Standard sizes:

Planks - 600 x 600, 1200 x 600mm (Standard)

Panels - Other sizes available upon request

MATERIAL SOURCE

All material used in the production of **Wood-comGSV** panels are from **European sources**. All manufacturing is done in the factory in Spain to the highest quality norms.

Our wood product components are sourced from providers with environmentally friendly practices and were required or request we supply certified

EDGE DETAIL

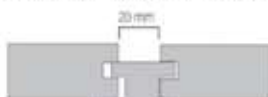
The TAVINEL range of panels can be machined to various edge profiles;

A range of edge profiles are available to suit the designers / architects' preferred look and installation method.

TG 03 - Tongue & G with 3mm Gap



RV 20 - Reveal, 20mm Shadow Gap



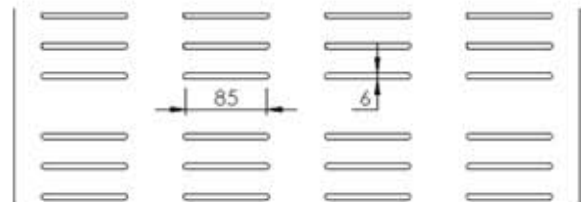
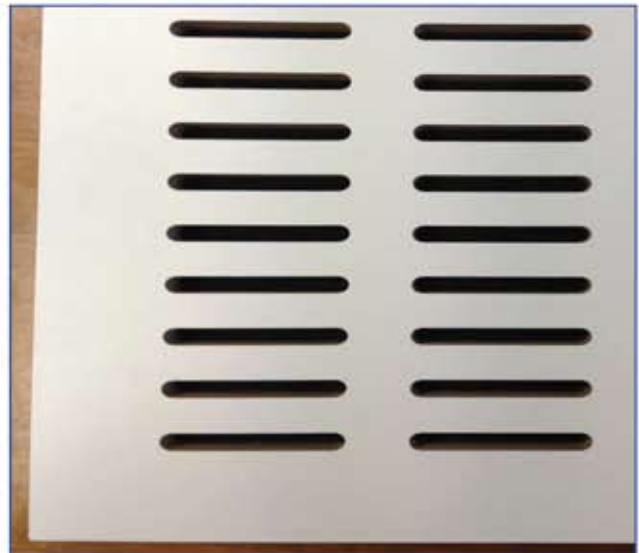
TGV 02 - Tongue & Groove V Joint



TBV 03 - Bevelled Joint 3mm Gap



WHITE PAINTED FINISH - SEMI-MATT



FINISHES

The **TAVINEL** acoustic panels are available in a varying range of surface finishes from real wood veneers, melamine and HPL to high quality painted surfaces.

Real Wood Veneers

- All wood species - First quality

Man made veneers

- Reconstituted veneers - Good colour match

Melamine

- Wood grain, Solid colours - Budget

Laminates (HPL)

- Wood grain, Solid colours - High wear





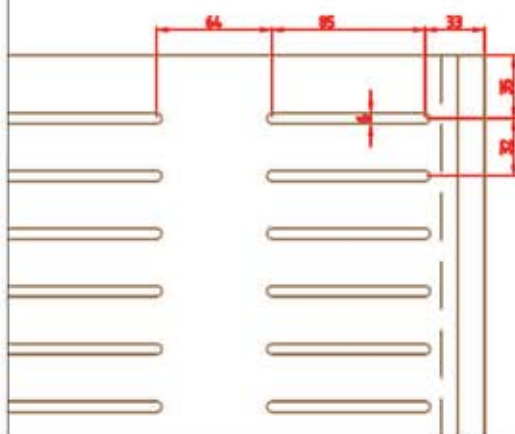
Finish melamine and veneer



E: 1/5

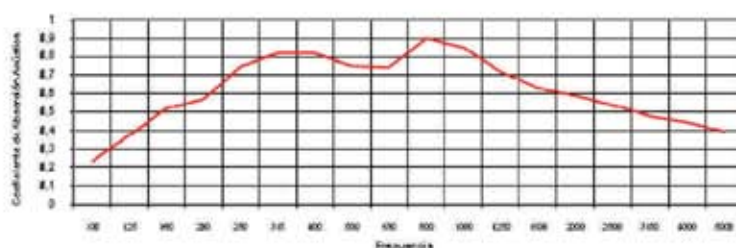
MACHINING DETAIL

E: 1/4



SOUND GRAPHIC

RC 6



TAVINEL ACUSTIC RC6 HIDDEN SYSTEM

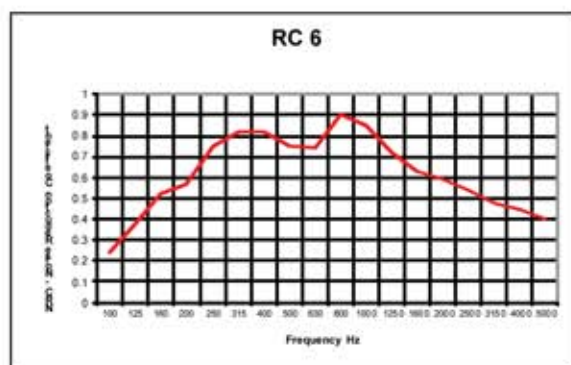
	Client:	Drawn by: MJBP
	Scale: 1/5 and 1/2.5	Approved: Approved:
	Observations: General tolerances +/-0.5mm	Date: 11-12-2013

TAVINEL ACOUSTIC PANEL - RC 6

DATA SHEET



Acoustic Performance



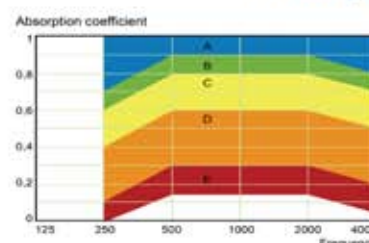
Panels are tested in a laboratory using 40mm of acoustic insulation, 30kg/m³ and with an air gap of 250mm.

by ACARMA - ACUSTICA ARQUITECTONICA Y DEL MEDIO AMBIENTE

Absorption

125	250	500	1000	2000	4000	NRC
0.38	0.75	0.75	0.65	0.59	0.45	0.74

NRC Value: **0.74**
Absorption Class **C**



Acoustic Absorption

The design and perforation type, size and quantity make the TAVINEL RC 6 is an absorbent panel often difficult to achieve in wooden panels.

Good for the mid to higher frequency ranges.

Technical Specifications

INSTALLATION

The TAVINEL panels are designed to be installed using the Woodcom GSV edge profiles or half perforation system. Products are to be installed to manufacturers recommendations by experienced installers.

Material should rest for 2 to 3 days prior in the site conditions before carrying out the installation work. In new buildings with fresh concrete and plaster, installation should not be carried out until the relative humidity has equalised.

An expansion joint of 2-3mm should be allowed for every

IMPACT RESISTANCE - HIGH

Medium density fibreboard panels used in our acoustic products are impact resistant and ideally suited for use in high traffic areas such a corridors and lecture theatres in schools, universities and public spaces.

HANDLING AND STORAGE

TAVINEL acoustic panels should be stored in a dry environment, flat and covered to protect them from dust and dirt.

Package should be opened and panels allowed to acclimatize prior to installation.

TECHNICAL ADVICE

Our qualified installation and acoustic engineers are available to assist with technical advice on specifications and installation requirements at

FIRE PERFORMANCE - HIGH

The core material used in Fire Rated panels is **Euroclass Bs2d0** Mdf . When veneer is the finish we also use a lacquer, Euroclass Bs2d0.

When manufacturing for fire rated requirements the factory complies with the certificate held in accordance to UNE-EN 13501-1:07 " classification of perfor-

APPLICATIONS

The TAVINEL RC 6 panel is designed for use in areas requiring a high level of sound absorption as acoustic treatment.

Conference Centres Auditoria Banquet Halls
Airports Universities Hotels





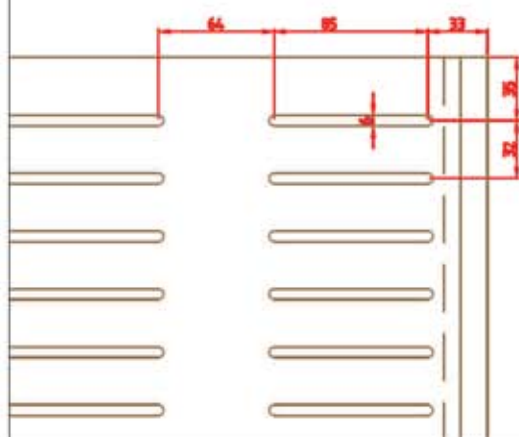
Finish melamine and veneer



E: 1/5

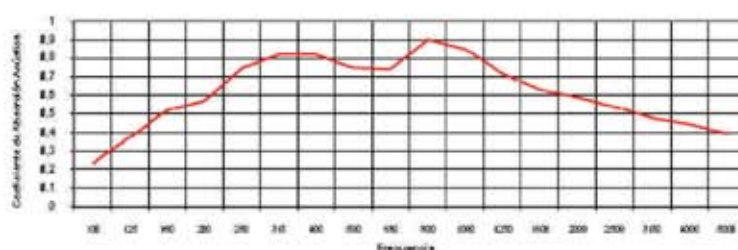
MACHINING DETAIL

E: 1/4



SOUND GRAPHIC

RC 6



TAVINEL ACUSTIC RC6 HIDDEN SYSTEM

	Client:	Drawn by: MJBP
	Scale: 1/5 and 1/2.5	Approved: Approved:
	Observations: General tolerances $\pm 0.5\text{mm}$	Date: 11-12-2013