

TAVINEL ACOUSTIC PANEL - RL 6

DATA SHEET

Architectural Specifications

PRODUCT

TAVINEL RL 6 is a acoustic panel using a **unique slotted perforated design**, giving a very uniform appearance when used as wall or ceiling treatment.

The Tavinel panels are made up of an MDF core sandwiched between a surface layer of real wood veneer, melamine or paint and an acoustic fleece.

DIMENSIONS

Perforation Face: 6 mm wide slots 23,5mm long

Open area: 31.7 % perforated face

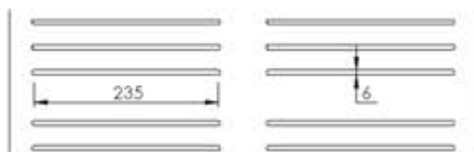
Thickness: 12mm

Weight: 9,5 kg / m²

Standard sizes:

Planks - 600 x 600, 1200 x 600mm (Standard)

Panels - Other sizes available upon request



MATERIAL SOURCE

All material used in the production of **WoodcomGSV** panels are from **European sources**. All manufacturing is done in the factory in Spain to the highest quality norms.

Our wood product components are sourced from providers with environmentally friendly practices and were required or request we supply certified materials; **PEFC and FSC Mdf & Veneers**.

EDGE DETAIL

The **TAVINEL** range of panels can be machined to various edge profiles;

A range of edge profiles are available to suit the designers / architects' preferred look and installation method.

TG 03 - Tongue & G with 3mm Gap



RV 20 - Reveal, 20mm Shadow Gap



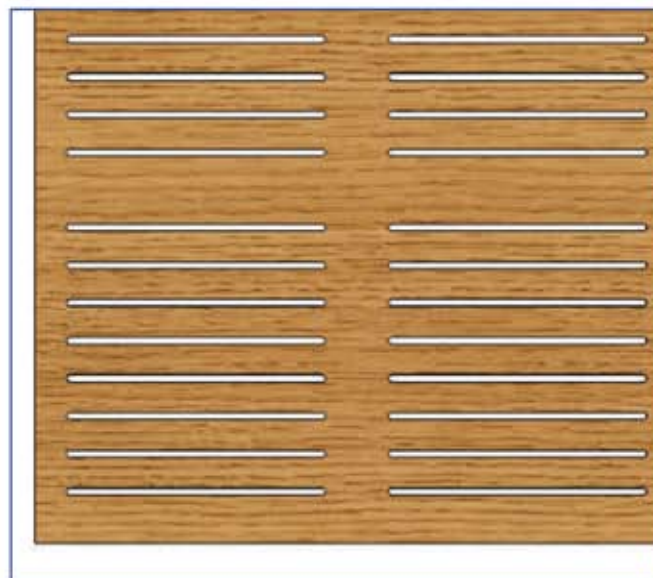
TGV 02 - Tongue & Groove V Joint



TBV 03 - Bevelled Joint 3mm Gap



OAK VENEER - NATURAL



FINISHES

The **TAVINEL** acoustic panels are available in a varying range of surface finishes from real wood veneers, melamine and HPL to high quality painted surfaces.

Real Wood Veneers

- All wood species - First quality

Man made veneers

- Reconstituted veneers - Good colour match

Melamine

- Wood grain, Solid colours - Budget

Laminates (HPL)

- Wood grain, Solid colours - High wear

Paint

- Matt, Semi-Matt & Gloss - Design



APPLICATIONS

The **TAVINEL RL 6** panel is designed for use in **areas requiring a high level of sound absorption** as acoustic treatment.

Conference Centres
Airports Universities
Multi purpose halls

Auditoria Banquet Halls
Hotels Restaurants
Theatres Leisure Centres



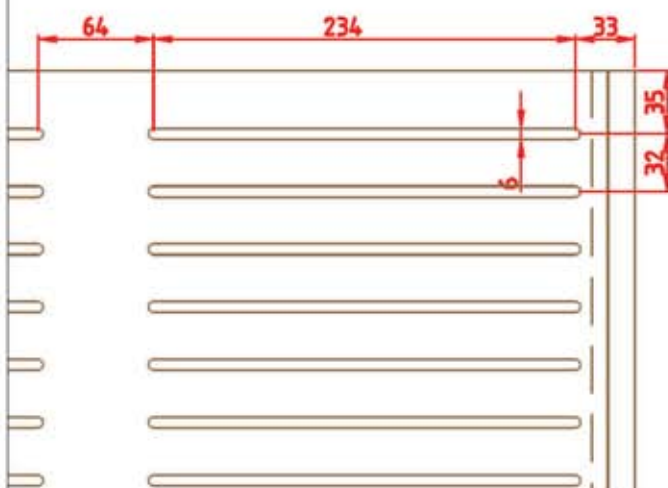
Finish melamine and veneer



E: 1/5

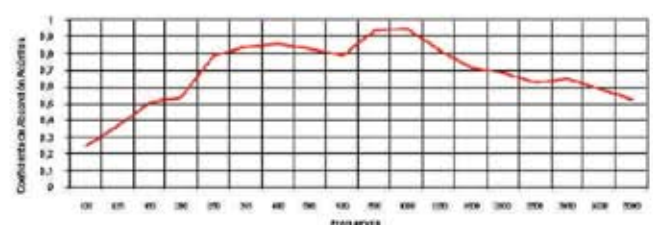
MACHINING DETAIL

E: 1/4



SOUND GRAPHIC

RL 6



TAVINEL ACUSTIC RL6 HIDDEN SYSTEM

	Client:	Drawn by: MJBP
	Scale: 1/5 and 1/4	Approved: Approved:
	Observations: General tolerances $\pm 0.5\text{mm}$	Date: 11-12-2013

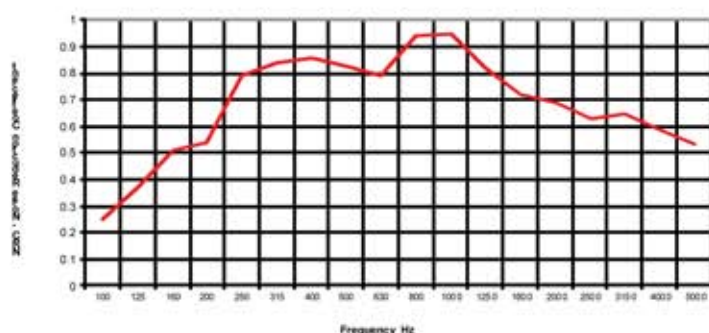
TAVINEL ACOUSTIC PANEL - RL 6

DATA SHEET

Acoustic Performance

Absorption rating - HIGH

RL 6



Acoustic Panel Specifications; UNIQUE ANGLED SLOTS
Panels are tested in a laboratory using 40mm of acoustic insulation, 30kg/m³ and with an air gap of 250mm.

Area Grooved Face : 12,6%
Area Perforated Back : 29,4%
Open area to sound : 12,6%

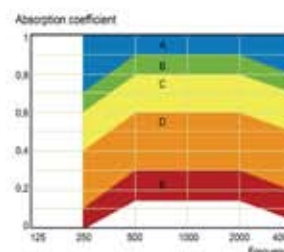
125	250	500	1000	2000	4000	NRC
0.37	0.79	0.83	0.95	0.69	0.59	0.82

NRC Value: 0.82
Absorption: Class B

ACOUSTIC ABSORPTION

The unique design and perforation type, size and quantity make the TAVINEL RL 6 a absorbent panel often difficult to achieve in wood panels.

Very good universal absorber for a wide frequency ranges.



Technical Specifications

INSTALLATION

The TAVINEL panels are designed to be Installed using the Woodcom GSV edge profiles or half perforation system.

Products are to be installed to manufacturers recommendations by experienced installers.

Material should rest for 2 to 3 days prior in the site conditions before carrying out the installation work. In new buildings with fresh concrete and plaster, installation should not be carried out until the relative humidity has equalised.

An expansion joint of 2-3mm should be allowed for every 7 meters.

When the finish is veneer - a natural product with inherent variations, panels should be selected for colour and grain matching prior to installation.

TECHNICAL ADVICE

Our qualified installation and acoustic engineers are available to assist with technical advice on specifications and installation requirements at info@woodcomgsv.com.

HANDLING AND STORAGE

TAVILINE acoustic panels should be stored in a dry environment, flat and covered to protect them from dust and dirt. Package should be opened and panels allowed to acclimatize prior to installation.

As these are **finished products** care should be taken in handling to prevent scratching and breakage.

FIRE PERFORMANCE - HIGH

The core material used in Fire Rated panels is **Euroclass Bs2d0** Mdf . When veneer is the finish we also use a fire retardant lacquer, Euroclass Bs2d0.

IMPACT RESISTANCE - HIGH

Medium density fibreboard panels used in our acoustic products are impact resistant and ideally **suited for use in high traffic areas** such as corridors and lecture theatres in schools, universities and public spaces.





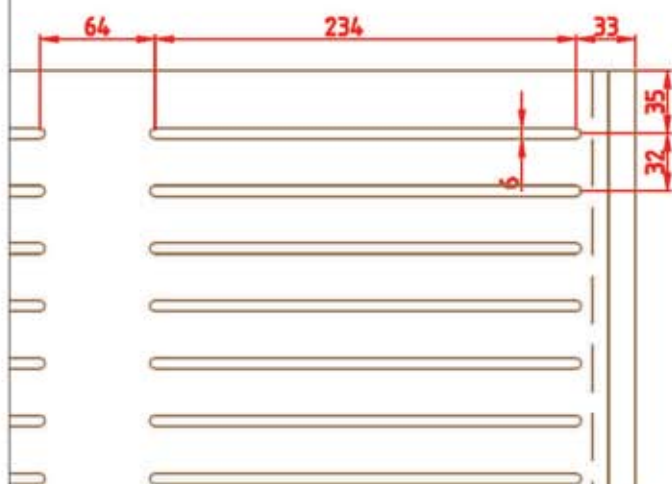
Finish melamine and veneer



E: 1/5

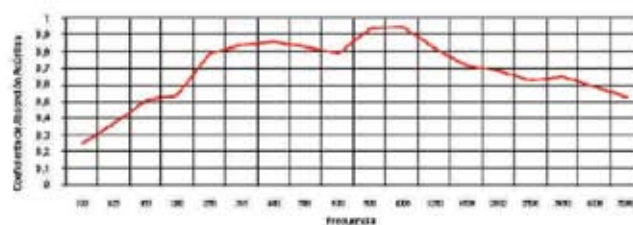
MACHINING DETAIL

E: 1/4



SOUND GRAPHIC

RL 6



TAVINEL ACUSTIC RL6 HIDDEN SYSTEM

Client:

Drawn by: MJBP

Scale: 1/5 and 1/4

Approved: Approved:

Observations: General tolerances $\pm 0.5\text{mm}$

Date: 11-12-2013