

Architectural Specifications

PRODUCT

abCOR LINEAR D8 / 32 is a acoustic panel using a circular **perfo-rated design**, giving a very uniform appearance when used as wall or ceiling treatment.

The Tavinel panels are made up of an **MDF core** sand-wiched between a **surface layer** of real wood veneer, melamine or paint and an **acoustic fleece**

DIMENSIONS

Perforation Face: 8 mm dia. circular perforations at 32mm centre

Open area: 4.0 % perforated face

Thickness: 12mm

Weight: 9,5 kg / m²

Standard sizes:

Planks - 600 x 600, 1200 x 600mm (Standard)

Panels - Other sizes available upon request

MATERIAL SOURCE

All material used in the production of **abCOR LINEAR** panels are from **European sources** . All manufacturing is done here in Ireland to the highest quality norms.

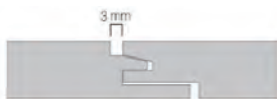
Our wood product components are sourced from providers with environmentally friendly practices and were re-quired or request we supply certified materials; **PEFC and FSC Mdf & Veneers.**

EDGE DETAIL

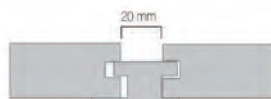
The **abCOR LINEAR** range of panels can be machined to various edge profiles;

A range of edge profiles are available to suit the designers / architects' preferred look and installation method.

TG 03 - Tongue & G with 3mm Gap



RV 20 - Reveal, 20mm Shadow Gap



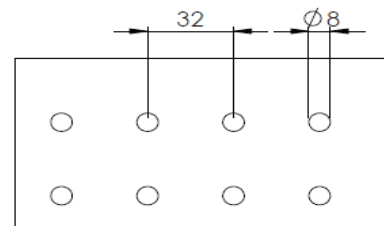
TGV 02 - Tongue & Groove V Joint



TBV 03 - Bevelled Joint 3mm Gap



WENGE VENEER - PRE-FABRICATED



FINISHES

The **abCOR LINEAR** acoustic panels are available in a varying range of sur-face finishes from real wood ve-neers, melamine and HPL to high quality painted surfaces.

Real Wood Veneers

- All wood species - First quality

Man made veneers

- Reconstituted veneers - Good colour match

Melamine

- Wood grain, Solid colours - Budget

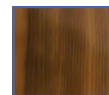
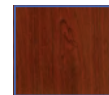
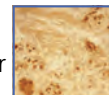
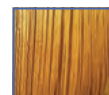
Laminates (HPL)

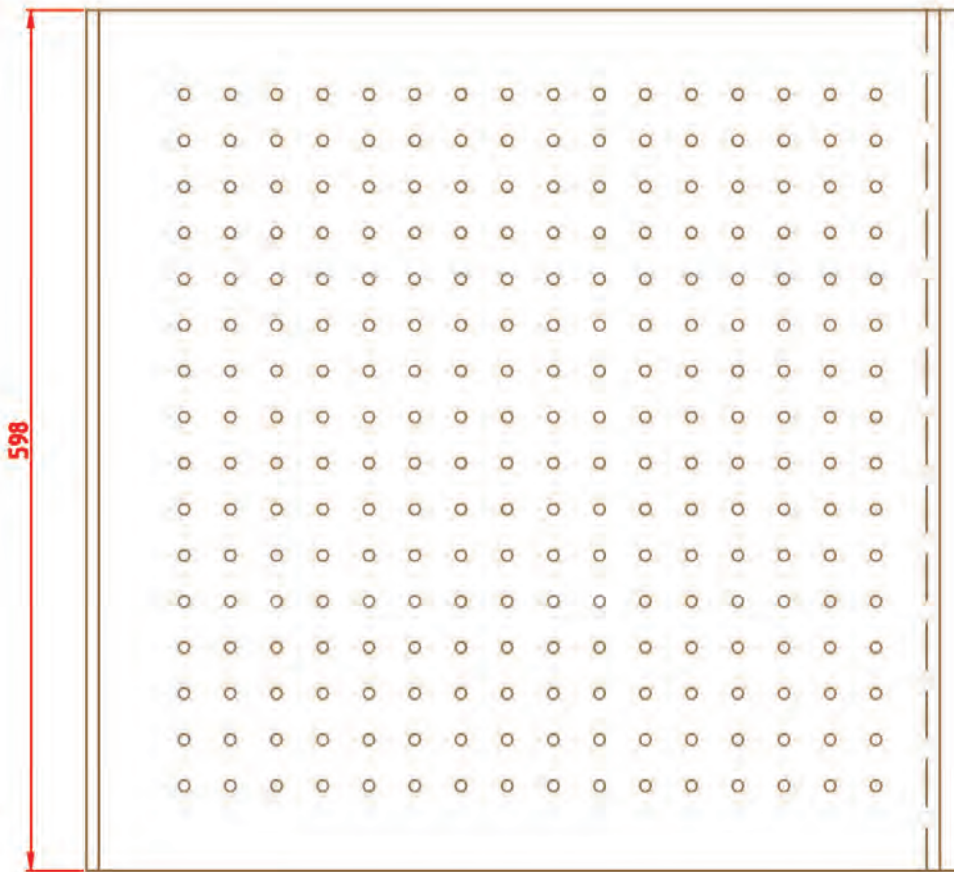
- Wood grain , Solid colours - High

wear

Paint

- Matt, Semi-Matt & Gloss - Design





Finish melamine and veneer

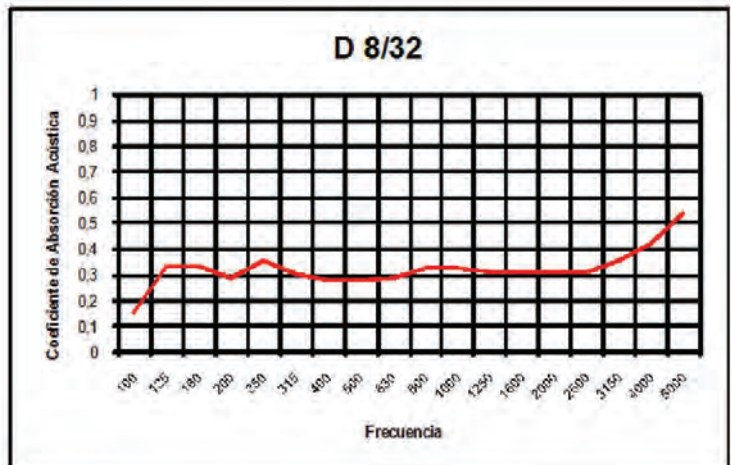
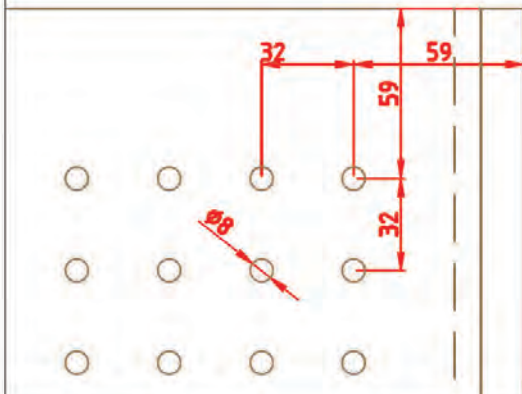


E: 1/5

MACHINING DETAIL

E: 1/2.5

SOUND GRAPHIC



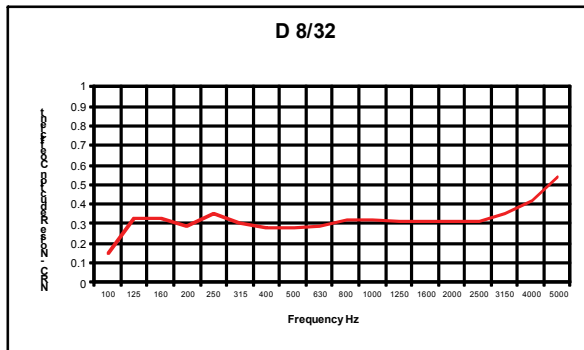
Drawn by: **MJBP**

Approved: **Aprobado por:**

Date: **11-12-2013**

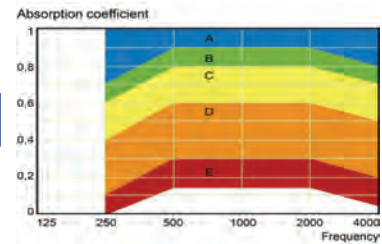
Acoustic Performance

Absorption rating - Lower



125	250	500	1000	2000	4000	NRC
0.33	0.35	0.28	0.32	0.31	0.42	0.32

NRC Value: 0.32
Absorption Class D



Acoustic Absorption

The design and perforation type, size and quantity make the TAVINEL D8 /32 an absorbent panel often difficult to achieve in wooden panels.

Good for the mid to higher frequency ranges.

Panels are tested in a laboratory using 40mm of acoustic insulation, 30kg/m³ and with an air gap of 250mm.

by **ACARMA** - ACUSTICA ARQUITECTONICA Y DEL MEDIO AMBIENTE

Technical Specifications

INSTALLATION

The abCOR LINEAR panels are designed to be installed using the abCOR LINEAR edge profiles or half perforation system. Products are to be installed to manufacturers recommendations by experienced installers.

Material should rest for 2 to 3 days prior in the site conditions before carrying out the installation work. In new buildings with fresh concrete and plaster, installation should not be carried out until the relative humidity has equalised.

An expansion joint of 2-3mm should be allowed for every 7 meters.

When the finish is veneer - a natural product with inherent variations, panels should be selected for colour and grain matching prior to installation.

IMPACT RESISTANCE - HIGH

Medium density fibreboard panels used in our acoustic products are impact resistant and ideally **suited for use in high traffic areas** such as corridors and lecture theatres in schools, universities and public spaces.

HANDLING AND STORAGE

abCOR LINEAR acoustic panels should be stored in a dry environment, flat and covered to protect them from dust and dirt. Package should be opened and panels allowed to acclimatize prior to installation.

As these are **finished products** care should be taken in handling to prevent scratching and breakage.

TECHNICAL ADVICE

Our qualified installation and acoustic engineers are available to assist with technical advice on specifications and installation requirements at info@acousticpanels.ie.

FIRE PERFORMANCE - HIGH

The core material used in Fire Rated panels is **Euroclass Bs2d0** Mdf . When veneer is the finish we also use a lacquer, Euroclass Bs2d0.

When manufacturing for fire rated requirements the factory complies with the certificate held in accordance to UNE-EN 13501-1:07 " classification of performance against fire of construction materials and building products".

APPLICATIONS

The abCOR LINEAR D8 /32 panel is designed for use in **areas requiring a high level of sound absorption** as acoustic treatment.

- | | | |
|---------------------|--------------|-----------------|
| Conference Centres | Auditoria | Banquet Halls |
| Airports | Universities | Hotels |
| Multi purpose halls | Theatres | Leisure Centres |
| Restaurants | | |

